

Classified Land Cover

Southern Manhattan - Community Boards 1 - 6

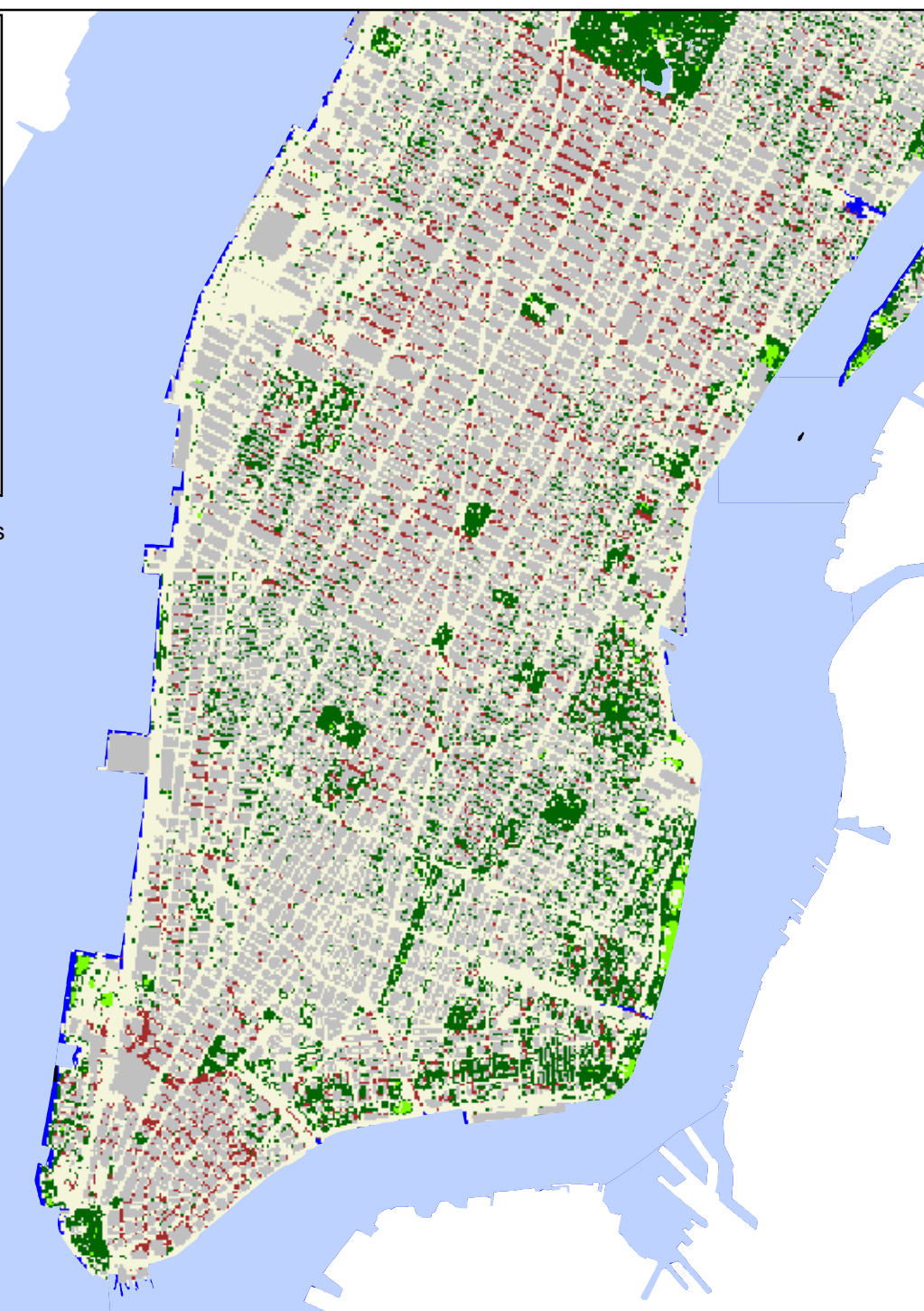
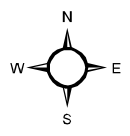
Legend

Classified Land Cover

- Unknown
- Tree/Shrub
- Grass
- Other Impervious Land
- Buildings
- Water
- Water



0 0.5 1 Miles



Color infrared images collected by the EMERGE Corporation were taken in September, 2001. Each pixel in the image was classified as either tree/shrub (dark green), grass/soil (light green), buildings (grey), other impervious land (tan), and water (blue). Classification accuracy in Manhattan is 80%.

Source: USDA Forest Service, Northeastern Research Station
Aerial photos taken September, 2001