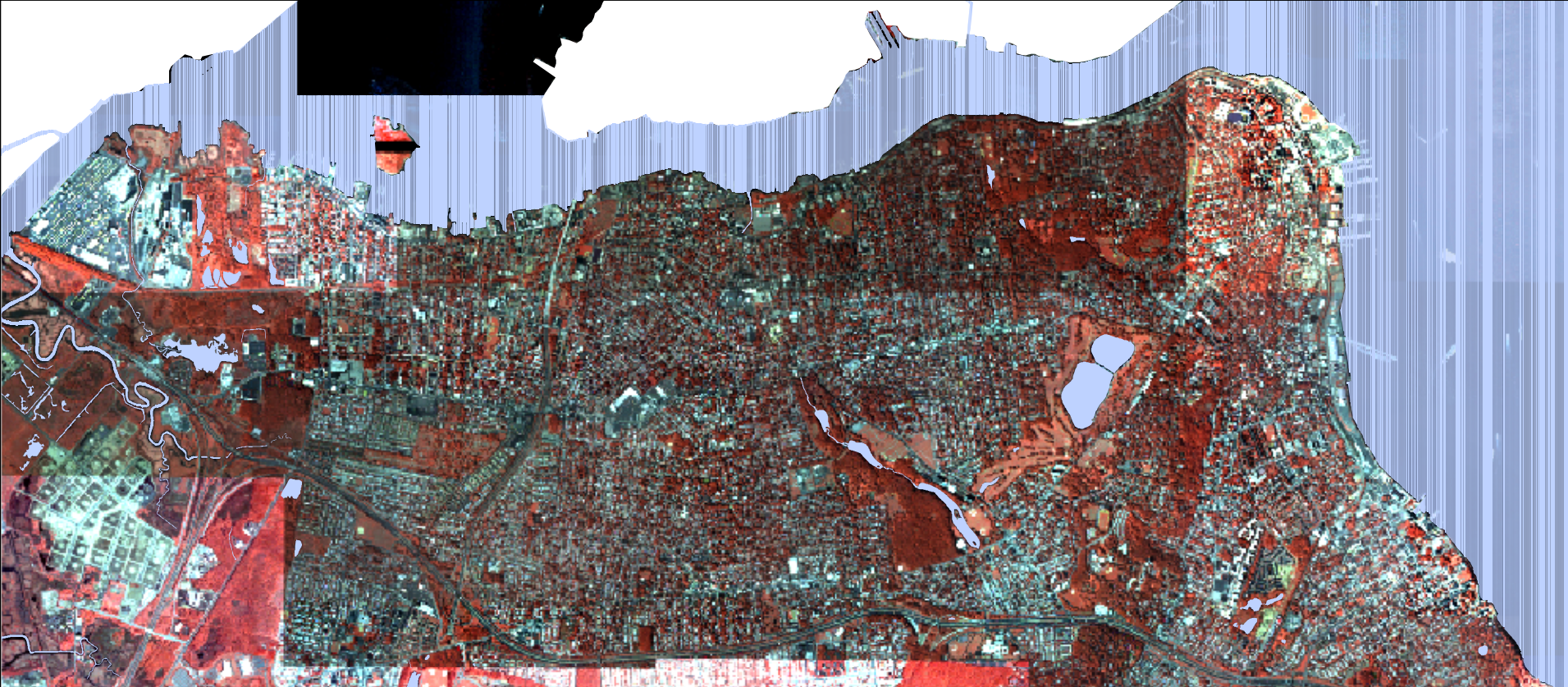



Color Infrared Image Northern Staten Island - Community Board 1



Color infrared images collected by the EMERGE Corporation were taken in September, 2001. Red often represents vegetation on this image but compare with the Land Cover Maps for more accurate designation of vegetation.
Source: USDA Forest Service, Northeastern Research Station
Aerial photos taken September, 2001

Legend

 Water



0 0.5 1 Miles